

# ABINGER AND COLDHARBOUR Parish News



## MARCH 2022

## Who's who in your Parish

**Honorary Assistant Priest:** The Rev. Virginia Smith (01306 885349)

**Licensed Lay Minister:** Mrs Hilary Swift (730898).

**Parish Secretary:** Sally McCance (737160) M, T, W, Th 9 -2 pm  
parishoffice@abingerandcoldharbour.org

**Organist and Choirmaster:** David Hansell:dbabchbr@gmail.com

**St. James' website:** www.stjameschurchabinger.org

**Webmaster:** Phil Rawlings (730382) web@stjameschurchabinger.org

**Christ Church website:** www.coldharbourchurch.org.uk

**Webmaster:** Martin Richards (711885) webmaster@coldharbourchurch.org.uk

**St Mary's, Holmbury:** www.holmburychurch.com

**St John's, Wotton:** www.wottonchurch.org

	<b>Abinger</b>	<b>Coldharbour</b>
<b>Churchwardens:</b>	Dominic Roberts Dan Russell (contact via Parish Office)	John Anthony Simpson (712026) Mary Hustings (711846)
<b>PCC Secretary:</b>	Sally McCance (737160)	Sally McCance (737160)
<b>Treasurer:</b>	Jim Hartley (07968 797578)	Martin Neve (713382)
<b>Gift Aid Secretary:</b>	Tim Prideaux (730730)	Helen Potter (712214)
<b>Flowers Secretary:</b>	Kim Edwards (730809)	Patsy Simpson (712026) Trish Syms (712100)
<b>Hall Bookings:</b>	Evelyn Hall (Kim Edwards) theevelynhall@gmail.com 01306 730809 Ab. Hammer Hall (730703)	John Venus Hall (Su Jones) suaj1512@gmail.com 07779 726930 Village Pavilion (711754)

### PARISH NEWS

**Editors:** Liz Hamilton (730382) Jenny Parker (731851), abingerpn@gmail.com

**Coldharbour Rep:** Jodechi "Tiggs" Morton, tiggs@womengardeningincoldharbour.com

**Distribution:** Kim Edwards (730809)

**Advertising:** Sally McCance (737160), PNadvertising@aol.co.uk

### ABINGER ORGANISATIONS

**Church Choir:** Lucy Harlow: lucyharlow@me.com

**Fair Secretary:** Liz Irvine: lizandkeithi@btinternet.com

**Sports Club:** Rob Dunn (730320) robert.a.dunn@btinternet.com

**Sports Club Booking Secretary:** Anne Burge (730950) annndaveburge@yahoo.co.uk

**Abinger Common & Wotton WI:** President: Leslie Childs (01483 205461)

**Wotton & Abinger Flower Show:** Trudie Bree (730976) t.bree@dsl.pipex.com

### COLDHARBOUR ORGANISATIONS

**Sports and Social Club/Village Society:** www.coldharbour.net

**Church Electoral Roll Officer:** Helen Potter (712214)

**Cricket Club:** John Hopper (711754)

**Golf Society:** Stuart McLachlan (712009)

**Village Band and Ukulele Orchestra:** Debby Chapman (711704)

**Book Club:** Emma Moreno (710024)

**Women's Gardening Group:** Jodechi Tiggs Morton  
tiggs@womengardeningincoldharbour.com

## **PARISH COUNCILS**

**Abinger:** abingerpc@hotmail.com [www.abinger-pc.gov.uk](http://www.abinger-pc.gov.uk)

**Coldharbour (Capel):** Stuart McLachlan (712009) [www.capel-pc.gov.uk](http://www.capel-pc.gov.uk)

## **DISTRICT COUNCIL**

**Councillor:** Hazel Watson (880120): [councillor.watsonh@molevalley.gov.uk](mailto:councillor.watsonh@molevalley.gov.uk)  
[for Surrey County Council matters: [h.watson@surreycc.gov.uk](mailto:h.watson@surreycc.gov.uk)]

## **SHERE SURGERY 01483 202066 / Fax 01483 202761**

### **Dispensary 01483 209913\***

Monday: 8.30am – 6.30pm (Closed 1.00-2.00pm)

Tuesday: 8.30am - 6.30pm (Closed 1.00-3.00pm)

Wed, Thurs & Fri: 8.30am - 6.30pm (Closed 1.00-2.00pm)

\*Dispensary takes calls after 11.00am

Dispensary is also open Saturday morning for prescription collection only

## **WESTCOTT SURGERY & DISPENSARY 01306 875577**

Mon, Tues, Thurs & Fri: 8.30am - 6.15pm (Closed 12.30 - 2.30pm)

Wednesday: 8.30am - 12.30pm

## **CAPEL SURGERY 01306 711105 / DISPENSARY\* 713010**

Monday to Friday: 8.30am - 6.30pm; [www.leithhillpractice.co.uk](http://www.leithhillpractice.co.uk)

\*Prescriptions cannot be picked up between 12 and 4

## **HOLMWOOD SURGERY 01306 889242**

Monday to Friday: 8.00am - 1.00pm.

## **MEDWYN SURGERY 01306 883816 (PHARMACY 01306 740865)**

Mon, Thurs, Fri: 8.00am – 6.30pm

Tues, Weds: 8.00am – 8.30pm

Pharmacy, Mon – Sat: 8.00am – 11.00pm

Pharmacy, Sun: 10.00am – 8.00pm

## **OUT OF HOURS EMERGENCY COVER - THAMESDOC**

Just call your surgery and you will be put through automatically

## **NHS DIRECT 111**

## **COVID 119**

## **POLICE**

Non-emergency: **101** or Emergency: **999**

## **ELECTRICITY POWER CUTS – 0800 783 8866**

## **WASP BUS – Soo Dean 07802 460069**

## **COLDHARBOUR BUS SERVICES [www.buses4U.org.uk](http://www.buses4U.org.uk)**

## **LOCAL SCHOOLS**

Abinger Common Nursery: Pre-School Leader: Hayley Hatton 07842978823

[abingercommonnursery@gmail.com](mailto:abingercommonnursery@gmail.com)

Surrey Hills All Saints Primary School. Head: Simon Coles 730747 (A) 881136 (W)

Scott-Broadwood School: Head: Susan Muat 01306 711181

Belmont, for boys and girls aged 2 to 16: 01306 730852

# SERVICES

## ST JAMES' CHURCH, ABINGER

<b>2<sup>nd</sup> March</b> 7.30pm	<b>Ash Wednesday</b> Ash Wednesday service <u>at St. Mary's, Holmbury</u>
<b>6<sup>th</sup> March</b> 10.30am	<b>The First Sunday of Lent</b> Holy Communion - followed by refreshments.
<b>13<sup>th</sup> March</b> 6.00pm	<b>The Second Sunday of Lent</b> No 8.00am Said Holy Communion this Sunday Choral Evensong
<b>20<sup>th</sup> March</b> 10.30am	<b>The Third Sunday of Lent</b> All Age Service - followed by refreshments
<b>27<sup>th</sup> March</b> 10.00am	<b>Mothering Sunday</b> Iona Mothering Sunday Service <u>at Christ Church Coldharbour</u> (see next page for details)



## KIDS AT ST JAMES'

<b>6<sup>th</sup> March</b> 10.30am	<b>Sunday Club</b> within the Holy Communion Service. All ages welcome, for arts, crafts and stories from the Bible. Parents invited to join or enjoy the main service as suits them.
<b>13<sup>th</sup> March</b> 9.15am	<b>Sunday Playgroup</b> Parents and children of all ages are welcome to meet and play. Refreshments provided.
<b>20<sup>th</sup> March</b> 9 - 10.30am	<b>All Age Service</b> <u>Sunday Playgroup</u> : Parents and children of all ages are welcome to meet and play. Refreshments provided <u>SJ's Junior Singing</u> : School age children welcome to come and make music!
9.45am	
10.30am	<u>All Age Service</u> : Everyone welcome to join in this relaxed and informal service
<b>27<sup>th</sup> March</b> 10.00am	<b>Mothering Sunday</b> <u>at Christ Church Coldharbour</u> (see next page for details)

## CHRIST CHURCH, COLDHARBOUR

<b>2<sup>nd</sup> March</b>	<b>Ash Wednesday</b>
7.30pm	Ash Wednesday service <u>at St. Mary's, Holmbury</u>
<b>6<sup>th</sup> March</b>	<b>The First Sunday of Lent</b>
9.15am	Said Holy Communion
<b>13<sup>th</sup> March</b>	<b>The Second Sunday of Lent</b>
10.00am	Second Sunday service - followed by refreshments
<b>20<sup>th</sup> March</b>	<b>The Third Sunday of Lent</b>
9.15am	Said Holy Communion
6.00pm	Evensong
<b>27<sup>th</sup> March</b>	<b>Mothering Sunday **</b>
10.00am	Iona Mothering Sunday Service - followed by refreshments

### **Mothering Sunday \*\***

We are looking forward to welcoming Abinger to Coldharbour for our Mothering Sunday service on Sunday 27<sup>th</sup> March, a simple Iona service for all the family at 10 o'clock, led by Revd. Virginia Smith. Mothering Sunday as a day of celebration has a long history, dating back to Medieval times. It was traditionally a day on which everyone took a break from Lent fasting, and 'went mothering', returning to their 'mother church', the church in which they had been baptised or their parish church, and afterwards feasting on all those things they had given up for Lent, particularly cakes! So Mothering Sunday is not just for the ladies! The ladies at Christ Church will however be especially honoured with traditional Spring posies. There will be refreshments after the service, an excellent start to everyone's Mothering Sunday celebrations. There's no need to book. Just turn up. We will be delighted to see you.



### **Parish Office has started coming to Coldharbour again**

Sally is in the JV Hall on the 1<sup>st</sup> and 3<sup>rd</sup> Mondays of the month from 10 am to 11 am. Please drop in with any questions, or just for a coffee and a chat. This month it will be on the 7<sup>th</sup> and 21<sup>st</sup>.

## **Our new House for Duty Rector – Kia Pakenham**

As many of you will know by now, Rev Kia Pakenham has been appointed as House for Duty Rector of Abinger, Coldharbour, Wotton and Holmbury St Mary, with specific responsibility for Abinger and Coldharbour. Kia is known to many of us already, having taken services at both St James' and Christ Church in recent months. Since her ordination she has worked at Wonersh and was School Chaplain at Duke of Kent.

The decision to appoint her by the committee, made up of members of Abinger PCC, Coldharbour PCC, the Diocese and our Patrons, was unanimous.

Kia, Guy and their family are planning to move into the Rectory in April and we hope that she can start her new post by helping us all celebrate Easter.

Kia will be installed at a special service at the beginning of April – more details to follow.

*Churchwardens of Christ Church and St James'*

## **Letter from Virginia**

*Dear Friends*

Each month I am fortunate enough to have no less than three parish magazines to peruse and all of them provide so much of interest. I can follow the activities of various clubs and organisations, learn about some of the remarkable people who live in our villages and check I have the times of services right in my diary. All three are so well produced and all credit to the various editors who work so hard to put them together and ensure that they are delivered in time each month. It cannot be an easy job and I'm sure there has to be quite a lot of judicious editing as well as making sure all the articles are slotted in to make a coherent whole which must be akin I imagine to compiling a jigsaw.

I think all three magazines are indicative of the community spirit which lies at the heart of our villages and we have to be so grateful that such a spirit exists. Human beings have always been social animals but latterly I think modern life has at times meant that we have become more isolated and more ego centred. And here it is interesting to note that often, when I meet wedding couples, and ask how they met the answer is 'on line.' The opportunities to meet your soul mate in normal everyday life just don't exist as they once did and now with so many people working from home the opportunities are even less for a whirlwind office romance.

## From the Editors

It was very sad to say goodbye to our old friends Tony and Mad in the autumn, and many of us were rather afraid that all was falling apart, particularly with Covid hitting us at the same time. However it is wonderful to know we have Kia and her family coming. We are really grateful for the many hard-working people who have held us together so reassuringly over the past months. One person who has stepped into the breach in an exceptional way is Virginia Smith, who has not only held many services for us, learnt our names, heard about our lives and worries, but has written a letter for the Parish News every month while we had no rector. This month her letter is a real testament to our community spirit. If you tend to skip over the churchy bits of the magazine, do go back and read this!

*Liz Hamilton and Jenny Parker*

## Miscellany

### Come and have a coffee and a chat ...

#### **SJs Café**

Every Wednesday morning from 8.45 to 10.30. Join us on the comfy seats at St James' for a tea or coffee and a bite to eat.

#### **Coldharbour Coffee Morning**

Friday March 4<sup>th</sup> from 10.30 to 11.30 in the John Venus Hall



## News from Shere Surgery

Anyone who has tried to book an appointment with Shere Surgery recently will be aware that they are having problems. Dr Emma Watts explains: This month we have struggled greatly with staff shortages. At one point four doctors were unwell with Covid, some for the second time, so we are struggling to provide the service we would like. Unfortunately, we have been unable to cover the absence with locums as there simply are not enough doctors available to meet demand. We hope you can bear with our team who are all trying their hardest.

# The Plough in Coldharbour

## Introducing Enes

Enes Uner, now the manager of the Plough, taking over from Bruno Zuliani in the autumn, came to Britain from Turkey in 2010. He grew up in a catering family – his grandfather had hotels in Ankara and Istanbul and Enes helped out in them from an early age. He came to study Business Administration at the University of the West of England in Bristol. After his Bachelor degree he went on to gain a Masters in Catering and Hospitality. During his studies, and as part of them, he worked in several hospitality venues. He has had jobs at the award-winning Chinese restaurant Hakkasan and at another London restaurant - Galvins. In the last four years he has worked for John Turner who is now the owner of



the Plough. Turner has several other catering outlets and Enes was working in some of these, including Roast near Borough Market. Enes obviously loves the Plough and Coldharbour, and the pub seems to be in good hands. He seems to be a man of ideas and new ventures. One of them is worth mentioning here. Thursday nights are now “Burger Nights”. At an all-in price of £14.95 you have a choice of 6 different kinds of burger –fish, chicken, vegan, Greek or “Plough Deluxe” and drink included. Enes’s other new interest is a 13 week-old Great Dane puppy called Raki who has already become a favourite with regulars at the Plough. Raki is the name of a well-known Turkish drink. Enes admits that he may have had one or two rakis when he decided to give the dog a new home. It is a beautiful puppy. One wonders how big he will soon be!

*Graham Mytton*

**19th March, 9:30-12:00: Help Needed!**

**Abinger’s Spring Leaf Sweep**

**Looking for volunteers to help clear the church yard. Come for as long as you can - refreshments provided.**



## Children



Our fairy-tale adventures continue as we enjoy exploring some all-time favourite stories. We put on a puppet show of Little Red Riding Hood; we built a bridge to trip trap across as three Billy Goats, and avoided the troll who wanted to eat us for his dinner! The Gingerbread Man was created both in paper and delicious gingerbread and we all took turns in building once more – this time houses for the three little pigs. Our Wolf huffing and puffing was amazing!

We've celebrated Chinese New Year by making pretty paper lanterns, exploring the sensations of noodles slipping through our hands and visiting our Chinese restaurants – chopsticks in hand! This is the Year of the Tiger so tiger masks were a must! Spring Rolls were on the menu for our cookery morning and we were able to continue the fun in the afternoon al fresco whilst we made a super yummy stir-fry over the fire.



It's at this time of the year we like to travel to far off places on our special aeroplane. We look at our huge world map, pick out a country to visit and it's up, up and away we go! However we also like to relax once our feet are back on the ground and we have a new home corner just perfect for that!

Please be sure to put a date in your diary as the **Great Abinger Bake Off returns on the 20th March, from 2pm-4pm at the Evelyn Hall**. This really is a super fun community event for both adults and children. On the subject of fundraising we'd like to say a big thank you to all our supporters who kindly donated raffle prizes at Christmas and Valentine's including the Abinger Hatch, Shere Delights, Seymours Estate Agents, Waitrose, Co-op and Kingfisher Farmshop and also to all our wonderful parents.

We are delighted to announce that we are now offering breakfast and afterschool clubs. Full information can be found on our website [abingercommonnursery.co.uk](http://abingercommonnursery.co.uk). If you have a child looking to start Nursery please do get in touch. Call 07842 978823 or email [abingercommonnursery@gmail.com](mailto:abingercommonnursery@gmail.com). We can't wait to show you around!

## The Abinger Common K6 Telephone Box



On Monday February 7<sup>th</sup> a group of Abinger residents officially undertook to take over the ownership and maintenance of the Abinger Common telephone box. Phil Rawlings (seen here with Beccy Anderson, Parish Clerk, who has paid £1 to BT on our behalf) is the local contact person. Please ring him (01306 730382) if you would also like to be involved or have ideas of how it could be used, other than just being preserved as a familiar icon and part of our traditional heritage. Initially it is a question of repairing a hinge so the door closes properly and giving it a lick of paint.

**Calling all children:** We are hoping children will like to have some of their art work on display, looking out at the world - just choose a pane of glass and put up your picture (best to laminate it first – it's a bit damp in there).



**ARE YOU AGED 18 OR OVER?  
LIVED OR WORKED IN ABINGER FOR OVER A YEAR?  
DO YOU WANT TO MAKE A DIFFERENCE TO OUR COMMUNITY?**

**Then why not consider becoming a parish councillor...**

*There are currently 2 vacant seats on Abinger Parish Council, one in the South Ward covering Okewood Hill, Walliswood and Forest Green and one in the North Ward covering Abinger Hammer and Abinger Common. We want to find active, enthusiastic, committed people to fill the vacancies and become part of the team.*

**What do parish councils do?**

Abinger Parish Council performs a worthwhile and valuable function for the communities in the Parish. Regular activities include reviewing and commenting on planning applications, managing the village greens at Abinger Hammer, Abinger Common and Forest Green, playgrounds at Abinger Hammer, Abinger Common and Walliswood, and representing the interests of the Parish generally.

**What's the role of a councillor?**

Parish Councillors are elected or (co-opted) unpaid representatives of the parish. We have 9 seats on the council, and members are supported by a part time Clerk. The council meets on the 3rd Monday evening of each month, to consider items of business and make decisions for action. The council also has a Planning committee that meets monthly. Full training is available for new councillors.

**Could you be a councillor?**

We are seeking active and committed applicants; councillors need to be able to spend an average of 6 hours per month on parish council activities including meetings and getting involved with new projects around the villages. Councillors also need to be IT literate and have facilities to access emails and documents sent via the internet.

*We have an energetic and forward-thinking team on our parish council – please consider joining us and making a real difference to your community. Application details are available from the Parish Clerk, Beccy Anderson [abingerpc@hotmail.com](mailto:abingerpc@hotmail.com); mobile no. 07716 928430.*

# Abinger Common and Wotton WI

On 3rd February we were pleased to meet up 'in person' once again. It was a pleasure to welcome new members and we hope to see them again next time.

Our talk was entitled Nutritional Therapy, and I have to say that my main reason for going was to enjoy the company and catch up on the news from the other members and the anticipation of a good teatime spread, rather than the talk. I feel we are rather inundated from many sources with information on how to eat well. However our two speakers, Ceri Morgan and Ann Souter, who run a company Recipe for Health, held our attention with their clear presentation on the fundamentals of beneficial foods and ways to improve our quality of life. We were encouraged to take control and not be passive about the ageing process. If we eat the right foods, and eat little and often to aid digestion, then this will improve our immune systems and enable

our bodies to remain healthy. In addition to eating a well-balanced diet we were reminded to stay hydrated and to avoid sugar and refined carbohydrates such as white bread and pasta. Other essentials to include in our lifestyles include exercise, good sleep, a positive attitude, and time in the sunlight.

The following tea, as I had hoped, was a special treat and included healthy sandwiches to balance the delicious but sugar-containing cakes.



"Oh, go ahead. You just won't eat anything else for the next year ... or two."

**NEXT MEETING:** Thursday, 3rd March, 2.30 p.m. at our summer venue - the Evelyn Hall, Abinger Common. The subject of the talk will be the Dorking Food Bank. Please do come along and you will receive a warm welcome.

*Claire Hill*

## Dorking Foodbank

Items for the food bank can be placed in the crate in the porch of St James'.

Anyone who needs help with food or energy bills should go to the website to see the times, and then just drop in at the Dorking Christian Centre.

[www.dorkingarea.foodbank.org.uk](http://www.dorkingarea.foodbank.org.uk)



# LOCAL HAPPENINGS AND EVENTS

## 'The Best of the West'

4th 5th, 10th, 11th 12th March by the Ewhurst Players



The Best of the West is a two hour amateur production featuring a medley of famous song and dance numbers from West End musicals. Directed and choreographed by seasoned professional Meg Bray and with musical mastery from Simon Fraser. 7.30 pm, matinees sat 2.30pm. Don't miss out. Book tickets now at [www.ticketsource.co.uk/ewhurstplayers](http://www.ticketsource.co.uk/ewhurstplayers) or call 01483 272378.

## A Celebration of Spring

**Saturday 26th  
March, 7.30pm**

**St Barnabas  
Church, Ranmore**

Chase away those winter blues with the Meadvale Singers, a local all-female close harmony group, who will be presenting an evening of music and words in St Barnabas Church.

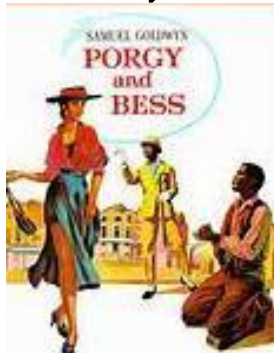


Popular music from the 40s to the 90s, including Swing, Jazz and Folk, along with seasonal words and poems. Guaranteed to lift the spirits as we leave these cold winter nights behind us!

Tickets £10 at the door. All proceeds to St Barnabas, the beautiful Grade II listed church on the North Downs/Pilgrims Way.

For further information contact Robin Luff at: 01306 884093 or [robinluff@btinternet.com](mailto:robinluff@btinternet.com)

## Holmbury Choral



### Leith Hill Music Festival (Dorking Halls) Saturday 9th April, 7.30pm

After being postponed for the last two years the Leith Hill Music Festival is back! Holmbury Choral (many of whose members are from Abinger and Coldharbour) will be joining other choirs to sing music from Gershwin's *Porgy and Bess*, Chilcott's *Little Jazz Mass* and Rutter's set of spirituals *Feel the Spirit* with fabulous soloist Melanie Marshall. Conductor: Jonathan Wilcox. Orchestra: Southern Pro Musica. Tickets from the Dorking Halls.

## Shere Village Cinema re-opening

We will be re-opening the cinema on **20th March** with our Spring event of *In the Heights*. At the time of writing there are a few tickets left. Please go to the website: <https://villagecinema.org> to see if there any available. £15/adult and £13.50 for children 13-17, including chilli (meat or veg) and rice. There will also be a pay bar for drinks on this occasion. We hope this will be a great start to our new season!



### April & May films

**Thursday 7th April – *The Courier*** is based on the real-life story of salesman, turned spy - Greville Wynne, played by Benedict Cumberbatch. In the early Sixties, the Cold War turned the potential for a nuclear apocalypse into a daily, persistent threat, as tensions continued to rise between the US and the Soviet Union. 'Cumberbatch is terrific, hooking the viewer in while the slow-burning story shifts into gear.' (Running time is 1 hour 51 minutes)

**Sunday 24th April – *Blinded by the Light*** is based on the memoirs of journalist Sarfraz Manzoor and tells the coming of age story of a teenage Pakistani migrant who is introduced, by his new Sikh friend, to the music of Bruce Springsteen.

**Thursday 5th May - *Supernova*** (details will be given in the April magazine)

All tickets, except for the Spring event, are £5/adult and £3.50/child. Seating will remain limited to 72 for the time being, but the wearing of masks is likely to be discretionary.

If you would like to get early news of our forthcoming films or to sign up to future newsletters, please see <https://villagecinema.org/newsletter-sign-up>

Shere Village Cinema Team

## Gilbert & Sullivan Masterclass with Richard Suart



Sat 9th April, St James'

Richard Suart is an opera singer and actor, specialising in the comic roles of Gilbert and Sullivan operas and operettas and most famously known for his numerous portrayals of Ko-Ko in *The Mikado*. Recently returned from touring with The Scottish Opera, Richard will be lecturing on the unique methodology of singing G&S and teaching those attending how to sing in the classic D'Oyly Carte style. Tickets £25, from [tickets@dandgchoir.net](mailto:tickets@dandgchoir.net)

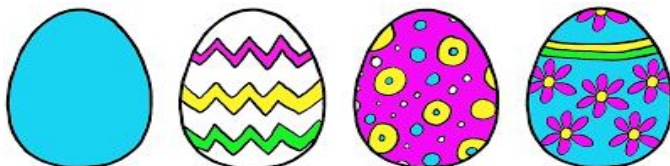
## An Evening of Gilbert & Sullivan / Trial by Jury

Saturday 23rd April - 7.30 p.m.

Peaslake Memorial Hall, Peaslake, Surrey. An evening of Victorian entertainment in two parts. The first half of the evening will contain a selection of G&S and other classic Victorian ballads. In the second half the Abinger D&G choir, conducted by Martin Hall, perform the famous duo's comic operetta, *Trial by Jury*. Tickets £13, from [tickets@dandgchoir.net](mailto:tickets@dandgchoir.net).



## QRMW – Easter Egg Hunt on Sunday 10th April



All are invited to our Easter Egg Hunt (Pasturewood Road, Holmbury St Mary RH5 6LG). It starts at 12.30. The charge is only £6 per child (parents are free) which includes entrance to the hunt. Children must be registered in advance, so parents please contact [debbiehornblow@yahoo.co.uk](mailto:debbiehornblow@yahoo.co.uk) (Tel: 07778873806). There will be stalls selling Easter Eggs, cakes, crafts, an Easter soft toy tombola and a bottle tombola.



## Investec International Music Festival comes to Coldharbour - Friday May 6th

This year sees the 150th anniversary of the birth of composer **Ralph Vaughan Williams**, and Investec International Music Festival (IIMF) will be celebrating his great musical legacy and Surrey Hills connections throughout its 2022 season, including a special event in Coldharbour on Friday 6 May.



Vaughan Williams was a great walker and would from time to time come across to Coldharbour from his childhood home at Leith Hill Place and play the organ in Christ Church, where his parents had been married and where some of his family members are buried. The festival invites you to follow in his footsteps with a guided walk around Leith Hill (from 11am) followed by a talk in the church itself (at 12.45pm), in which the distinguished musicologist, writer and lecturer Richard Wigmore will introduce RVW's life and works. Tickets are available for walk + talk or for the talk only via the festival's box office at <https://tickets.iimf.co.uk>.

### Other events in IIMF's spring programme (see [www.iimf.co.uk](http://www.iimf.co.uk)):

**Sat 19 March** at Charterhouse (Memorial Chapel) - 7.30pm: Britten Sinfonia & violinist Alexander Sitkovetsky including RVW's *Fantasia on a Theme of Thomas Tallis* & *An Oxford Elegy*

**Thu 5 May** at Charterhouse (Hall) - 7.30pm: Sitkovetsky Trio & Friends including works by RVW, Beethoven, Klouda & the winning work of the Surrey Hills Young Composer Competition

**Sat 7 May** at The Menuhin Hall, Cobham - 7.30pm: Modigliani Quartet including works by RVW, Ravel & Schubert (with 6pm pre-concert talk)

**Wed 11 May** at Dorking & St Barnabas Ranmore Common - 10.30am walk & 12pm concert: Pilgrims' Guided Walk & Young Artist Concert with gifted young pupils from The Yehudi Menuhin School

**Thu 12 May** at The Menuhin Hall - 7.30pm: Gary Hoffman cello & Wu Qian piano including works by RVW, David Matthews, Mendelssohn & Chopin

**Sat 14 May** in the Garden Room at RHS Hilltop, RHS Garden Wisley - 7.30pm: Festival Finale with clarinetist Michael Collins & Friends including works by RVW, Holst & Beethoven



## Fetes and Fairs



**Coldharbour Village Fete Saturday May 21st**

A date for your diary and a call for help! Coldharbour Village Fete returns in May this year. The date: Saturday 21st May from 2 p.m. at Coldharbour Memorial Ground.

Coldharbour has a long history of traditional fetes with fun and entertainment for all the family, and as we emerge from Covid, we are planning a return to normality. Punch and Judy are already limbering up, the village band is on standby, teas, BBQ and bar are in our sights, the raffle is taking off and an Auction of Promises is planned. If you would like to run a stall, help on a stall or help with logistics, or just find out more, we'd love to hear from you.

Please contact John Anthony Simpson ([1johnasimpson@gmail.com](mailto:1johnasimpson@gmail.com)) or Mary Hustings ([mary.hustings@btinternet.com](mailto:mary.hustings@btinternet.com)) in the first instance.

### Save the Date!

**Saturday 11<sup>th</sup> June 2022**



We are excited to announce that The Abinger Medieval Fair will return this summer after a gap of 2 years. It will be a great opportunity for us all to get together, have lots of fun and raise money for local charities.

Any jam makers out there, we would really appreciate your help. Now would be a great time to make some marmalade for the preserves stall.

We look forward to seeing you all there on the day.

Liz Irvine – Fair Secretary

## Dorking Museum in March

The Museum's current exhibition, '**Darking 1620**', has proved a particularly popular attraction with visitors and will remain until May 21st. So there is still plenty of time to enjoy a view of life in 'Darking' in 1620 and the story of William Mullins and the Mayflower travellers.

A recent addition to the Museum's displays is a small replica of Dorking Greystone Lime Company "**Coffee Pot**" No. 1, the first steam locomotive purchased by the company to replace the team of horses pulling wagons at their quarry in Betchworth. Celebrating its 150th anniversary last year, Coffee Pot No.1 is one of the world's oldest working railway steam locomotives, now located at the Beamish Museum in County Durham. The model was made for the anniversary by local author and railway enthusiast Julian Womersley and is on loan to the Museum



**South Street Caves:** Our cave tours resume in April, but these sell out quickly. The Caves date from the 17th century and hidden galleries take you down to the 'Mystery Chamber', 50 feet below street level. There are four open day tours once a month, or private tours can be arranged for special groups or occasions. Please see the website for details and booking.

**International Women's Day (8th March):** The local area was a hot-bed of activity in the fight for the vote for women, with Emmeline Pethick-Lawrence one of the most noted participants. Look out for blue plaques unveiled on the front of the former home of the Pethick-Lawrences, The Dutch House in South Holmwood and the campaign headquarters run by Charlotte Marsh and Helen Gordon Little in Howard Road, Dorking.

The Museum is at 62 West Street, Dorking RH4 1BS. Thursday 1pm-4pm, Friday and Saturday 10am-4pm. Free entry, but donations welcome. Visit [www.dorkingmuseum.org.uk](http://www.dorkingmuseum.org.uk). Enquiries to [admin@dorkingmuseum.org.uk](mailto:admin@dorkingmuseum.org.uk) or phone 01306 876591.

## Outdoor Spaces



### Abinger Common Gardeners

On a windy February afternoon Abinger Common Gardeners met to swap seeds and dreams for thriving gardens. Winter blues were laughed away with thoughts and plans for the gardening year ahead. Caroline has now started a seed bank, so save any seed surplus to your requirements and bring them along to swap next time.

The Abinger Common Gardeners is not a club as such but a group of enthusiastic gardeners who aim to create a friendly community with a common interest in gardening. If you're interested in being part of the group do visit the web site: [abingercommongardeners.org](http://abingercommongardeners.org) or email Caroline and Kim at [abingergardeners@gmail.com](mailto:abingergardeners@gmail.com). Everyone is welcome, the young and 'not so young', beginners or experienced.



## Your Garden in March

*Now I know that Spring will come again,  
Perhaps to-morrow: however late I've patience  
After this night following on such a day.  
While still my temples ached from the cold burning  
Of hail and wind, and still the primroses  
Torn by the hail were covered up in it,  
The sun filled earth and heaven with a great light  
And a tenderness, almost warmth, where the hail dripped,  
As if the mighty sun wept tears of joy.*

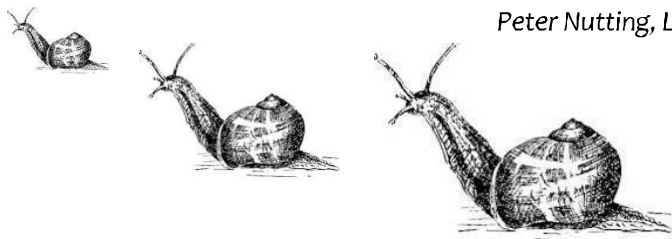
(from 'March' by Edward Thomas)

Winter often clings on through March, and by now we're all longing for those welcome green shoots and bluer skies ahead. Plenty of jobs are waiting to be done in the garden and greenhouse. Time to tidy up borders and finish pruning roses early on in the month. After the recent heavy winds, prune out any wind-damaged branches on trees and shrubs. It's worth checking that tree ties aren't too tight, and that stakes are still firmly anchored in the ground.

Dividing clumps of overgrown perennials now will ensure your plants remain healthy and vigorous. New spring shoots and seedlings will need protection from slug damage. Hosta, delphiniums, dahlias, sweet peas and tulips are all top of the slug menu. Peas, beans, lettuce, celery and potato tubers provide them with a tasty snack too!

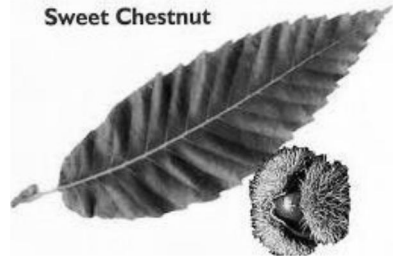
Any dahlias stored over winter in the greenhouse can be planted up in pots now for growing under cover. In two or three weeks they'll start to sprout and once there is no danger of frost they can be planted in the garden again. I protect each of my own dahlias with a copper ring around the base with a layer of wool pellets inside, which seems to do the trick nicely.

Peter Nutting, Leafhill Horticulture



## The Abinger Roughs

As part of the Queen's Green Canopy celebrations, we plan to reinstate an avenue of sweet chestnut trees on the south-east edge of Abinger Roughs next to the East Lawn. The magnificent eighteenth-century avenue of trees had fallen into decline and very few trees remained after the great Storm of 1987. Abinger Hammer's Henry Barnard, National Trust Lead Ranger said: "We plan to reinstate the avenue by planting around 24 trees and surround them with post and rail tree guards. The trees will be well-spaced to encourage an open, grassy feel, and once again local people will be welcome to harvest the sweet chestnuts".



It is believed that the original trees date to c1780, when Abinger Hall gardens were first created. Within living memory there was still an avenue, but most of the trees were in very poor condition. However the villagers in Abinger Hammer would still collect large numbers of chestnuts to roast at Christmas. Emma Corke, a trustee of the Abinger Hall Estate who previously owned The Roughs said: "I can remember when there was a complete row of trees along the west side of the path. Many were magnificently gnarled and some had lost a number of limbs. Not all fruited well by that stage, but the whole path would be covered with chestnuts in the autumn."

*wanda.arden@nationaltrust.org.uk*

<https://www.nationaltrust.org.uk/abinger-roughs-and-netley-park/features/why-were-restoring-wood-pasture-at-abinger-roughs>

## Directory of Local Businesses

BUILDERS etc.	
B A Gunter	01306 628291
Dorking Glass	01306 882971
RB Fencing	01306 640143 01483 414745 info@rbfencingltd.co.uk
LHP Groundwork and Drainage	01306 628412 info@lhpl.co.uk
Lyne & Co Capel Building and Renovation	01293 871008 nfo@lyneandco.co.uk
AR Surfacing (drives&patios)	07771 808332 alfie.vanloo@sky.com

<b>CARPENTERS</b>	
Tony Winch – Carpenter, Joiner Cabinet Maker	01306 742373 07969 016924 www.tonywinch.com
<b>CHARTERED ACCOUNTANTS</b>	
Bullimores	01306 880880 partners@bullimores.co.uk
<b>CHIMNEYS &amp; CHIMNEY SWEEP</b>	
Joe Lund	07930 507115 and 01243 583430
<b>COMPUTERS</b>	
Surrey Hills PC MAC and PC	01483 608242 07771 665863 david@surreyhillspc.co.uk
WMF-IT consultants	01306 731253 sales@wmf-it.co.uk
<b>DOG BOARDING</b>	
Katy at Boarders	Boarders4dogs@gmail.com
<b>DECORATORS</b>	
Dorking Decorators	01306 640418 www.dorkingdecorators.co.uk
Leith Hill Decorating	07989 747722 leithhilldecorating@gmail.com
<b>ELECTRICAL</b>	
Smithers & Co Electrical	01737 843844 07850 563091
<b>FUNERALS</b>	
Sherlock & Sons	01306 882266
Surrey Green Burials	01306 740407 www.surreygreenburials.co.uk
<b>GARDENS AND TREES</b>	
David Ford Tree Care	01306 611661 07940 197911 info@davefordtreecare.co.uk
Capel Tree Surgeons	01306 711124 07775 727121 www.capeltreesurgeons.co.uk
Bury Hill Landscape Supplies	01306 877540 www.buryhilllandscapesupplies.co.uk
Groundscapes JOBS IN GARDENING	01306 711720 recruitment@groundscapes.uk.com
PJ Oliver & Son House & Garden Maintenance	07722 158111
Scovell & Sons Horticultural Services	01306 611384 07597 946240 info@scovellandsons.co.uk
LEAFHILL Peter Nutting	07572 712592 info@leafhill.co.uk
Neil McCance Down to Earth Garden Services	01306 730259 evenings downtoearthNFM@aol.com
Osborne Landscapes & construction. Mark Osborne	07818 001840 01306 730090
Phil's Mowing	07905 160765 phil@philsmowingdorking.co.uk
Mart's Gardening Maintenance	07480 831178 marts.65.cox@gmail.com

<b>SPORT, BEAUTY, HEALTH &amp; WELLBEING</b>	
Keeley Cricket Bats	07778 692371 andrewspeters@hotmail.co.uk
The Beauty Shed - Garden Beauty Studio	07748 244621 www.thebeautyshedsurrey.co.uk thebeautyshed@gmail.com
Surrey Hills Hypnotherapy	07929 253834 www.surreyhillshypnotherapy.co.uk
Abinger Sports Club: Tennis	Charlieye2020@gmail.com 07774 773 993
Dance a Ramix	01306 731182. 07899 842 727 dancearamix@btinternet.com
Dorking Lawn Tennis and Squash Club	01306 889009 www.dltsc.co.uk
Peaslake Beauty Room. Avril Munford	01306 731182 pamperyourself@thepeaselakebeautyroom.co.uk
Revitalise Fitness Mobile Personal Training and Coaching	07858 731890 info@revitalisefitness.com
Hannah Schellander Hypnotherapy	07846 508117 www.hannahschellander.com
Jodechi (Tiggs) Morton Psychotherapy, CBT, TA, Life Coaching	07825 138508 info@jodechicoachingandcbt.com
<b>PEST CONTROL</b>	
EMWOOD	0800 092 2277; 01306 501426
PROTECTA PEST CONTROL	01403 259972 07833 259972 www.protecta-pestcontrol.co.uk
<b>PRINTING</b>	
Mark Mitchell, M V Press	molevalleypress@gmail.com
<b>PUBS</b>	
The Abinger Hatch	01306 730737
The Plough Inn, Coldharbour	01306 711793
<b>REMOVALS</b>	
EDE BROS	01306 711293 edebros.co.uk
<b>SHOPS</b>	
Coldharbour Village Shop	01306 711793
Kingfisher Farm Shop	01306 730703
Abinger Hammer Village Shop	01306 730701
<b>SWIMMING POOLS</b>	
Burgess Pools	01306 730952 burgesspools@yahoo.co.uk
<b>TAXI</b>	
Dorking Taxis Ltd	01306 885533 enquiries@dorkingtaxis.co.uk
<b>VETS</b>	
The House Vet	01483 272999 info@rowlyhousevet.net

## DATES FOR YOUR DIARY



### March

- 2<sup>nd</sup> SJs café, St James', 8.45 – 10.30am  
3<sup>rd</sup> A&W WI, Evelyn Hall, 2.30  
4<sup>th</sup> CH coffee morning, JV Hall, 10.30 -11.30am  
4<sup>th</sup> - 5<sup>th</sup> Ewhurst Players, Best of the West  
10<sup>th</sup> - 12<sup>th</sup>  
9<sup>th</sup> SJs café, St James', 8.45 – 10.30am  
16<sup>th</sup> SJs café, St James', 8.45 – 10.30am  
19<sup>th</sup> Spring Churchyard Sweep, St James'. 9.30 -12  
20<sup>th</sup> Great Abinger Bake Off, Evelyn Hall, 2-4  
20<sup>th</sup> Shere Cinema reopens - *In the Heights*  
23<sup>rd</sup> SJs café, St James', 8.45 – 10.30am  
26<sup>th</sup> Celebration of Spring Concert, St Barnabas, 7.30  
30<sup>th</sup> SJs café, St James', 8.45 – 10.30am

### April

- 6<sup>th</sup> SJs café, St James', 8.45 – 10.30am  
7<sup>th</sup> Shere Cinema *The Courier*  
9<sup>th</sup> G&S Masterclass, St James'  
9<sup>th</sup> LHMf concert, Dorking Halls, 7.30pm  
10<sup>th</sup> Easter Egg Hunt, QRMW, 12.30  
23<sup>rd</sup> CH Plant Sale, Christ Church, 9-12  
23<sup>rd</sup> D&G's G&S evening, Peaslake, 7.30

### May

- 6<sup>th</sup> Vaughan Williams event, Coldharbour

**NEXT ISSUE: April 2022**

**Closes 1pm**

**Wednesday 23<sup>rd</sup> March**

**abingerpn@gmail.com**

*Please continue to send us your  
contributions. They make the magazine!*